

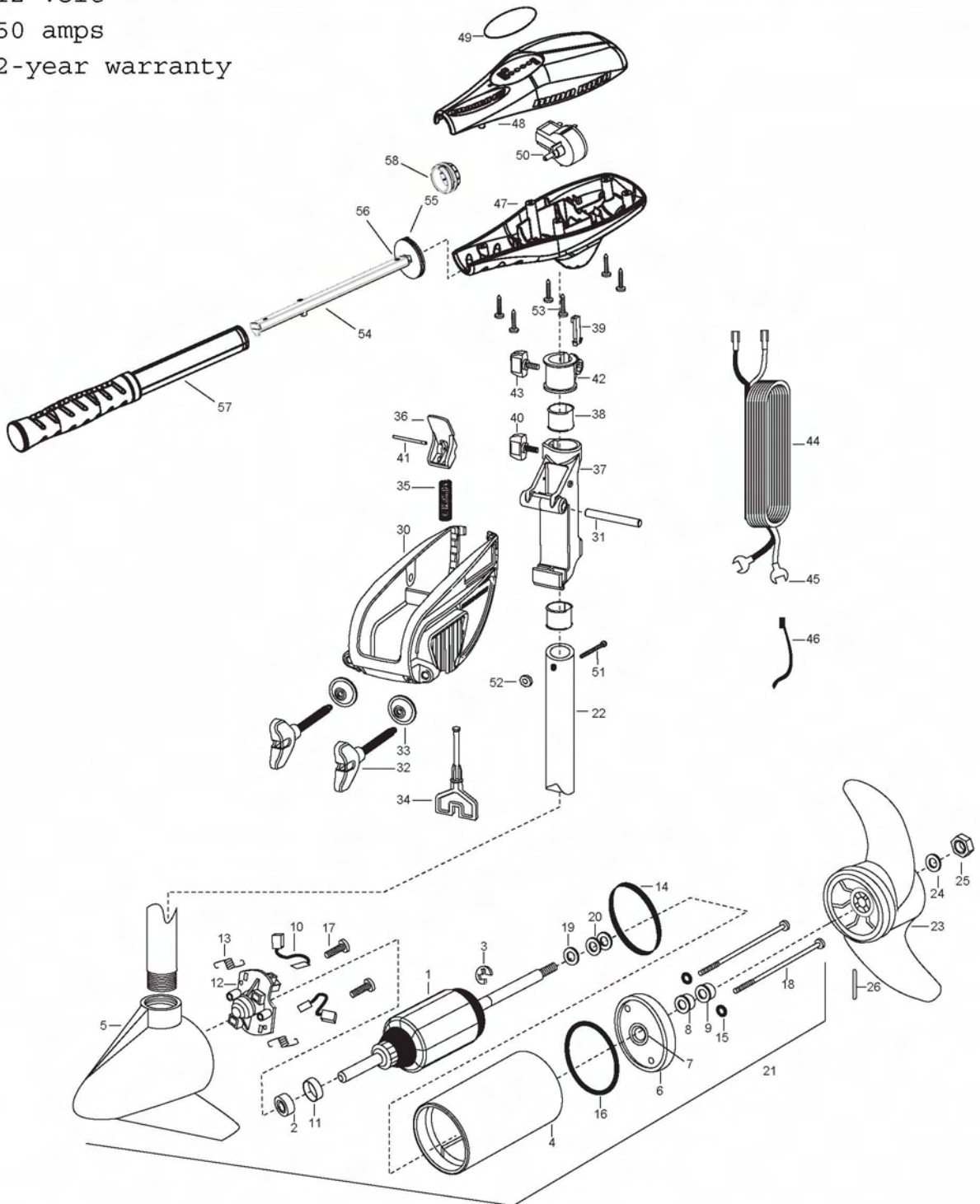
Endura C2 55

for use with "L" serial numbers

12-volt

50 amps

2-year warranty



ENDURA C2 55 - 36" AND 42" PARTS LIST

In the U.S.A., replacement parts may be ordered directly from MINN KOTA Parts Dept., 121 Power Dr., Mankato, MN 56002-8129. In Canada, parts may be ordered from any of the Canadian Authorized Service Centers. Visit minnkotamotors.com for a current listing. Be sure to provide the MODEL and SERIAL number of your motor when ordering parts. Please use the correct part numbers from the parts list. Payment for any parts ordered from the MINN KOTA parts department may be by cash, personal check, Discover Card, Master Card or VISA. To order call 1-800-227-6433 or FAX 1-800-527-4464.

| <u>Item</u> | <u>Part Number</u> | <u>Description</u> |
|-------------|--------------------|---|
| 1 | 2-100-121 | ARMATURE ASSEMBLY 12v 3.62 FW |
| 2 | 140-010 | BEARING- BALL |
| 3 | 788-015 | RETAINING RING |
| 4 | 2-200-101 | CENTER HOUSING ASSEMBLY- |
| 5 | 2-300-196 | BRUSH END HOUSING ASSEMBLY 3.62 SPCO 36" |
| | 2-300-195 | BRUSH END HOUSING ASSEMBLY 3.62 SPCO 42" |
| 6 | 2-400-101 | PLAIN END HOUSING ASSEMBLY |
| 7 | 144-049 | BEARING- FLANGE, SERVICE ONLY |
| 8 | 880-003 | SEAL |
| 9 | 880-006 | SEAL WITH SHIELD |
| 10 | 188-036 | BRUSH ASSEMBLY [2.EA] |
| 11 | 725-050 | BRUSH RETENTION- PAPER TUBE |
| 12 | 738-036 | BRUSH PLATE WITH HOLDER |
| 13 | 975-040 | SPRING-TORSION [2.EA] |
| 14 | 337-036 | GASKET |
| 15 | 701-008 | O-RING [2.EA] |
| 16 | 701-081 | O-RING |
| 17 | 830-007 | SCREW- # 8-32 [2.EA] |
| 18 | 830-042 | THRU BOLT 10-32X8.83 [2.EA] |
| 19 | 990-067 | WASHER- STEEL THRUST |
| 20 | 990-070 | WASHER- NYLATRON [2.EA] |
| 21 | 2097092 | MOTOR ASSEMBLY 12V 3.62 5SPC FW 36" |
| | 2097098 | MOTOR ASSEMBLY 12V 3.62 5SPC FW 42" |
| 22 | 2032052 | TUBE COMPOSITE 36" |
| | 2032053 | TUBE COMPOSITE 42" |
| ■ | 1378170 | PROPELLER KIT |
| 23 | 2091170 | PROP, POWER 3-5/8" |
| 24 | 2151726 | WAHER- 5/16 STD SS |
| 25 | 2053101 | NUT- NYLOC 5/16 |
| 26 | 2092600 | PIN-DRIVE |
| ■ | 2771818 | BRACKET & HINGE ASSEMBLY (INCLUDES 30-41) |
| ■ | 2771910 | BRACKET ASSEMBLY (INCLUDES 30, 32, 33) |
| *30 | 2061910 | BRACKET |
| 31 | 2060510 | PIN-HINGE |

PARTS LIST (cont.)

| <u>Item</u> | <u>Part Number</u> | <u>Description</u> |
|-------------|--------------------|--|
| ■ | 2881300 | SCREW-CLAMP, WASHER, RETAINER KIT [2.EA] |
| *32 | 2061300 | SCREW-CLAMP [2.EA] |
| *33 | 2011710 | WASHER-CLAMP [2.EA] |
| 34 | 2063605 | T-BAR, PLASTIC |
| 35 | 2062706 | SPRING- T-BAR |
| 36 | 2067201 | LEVER- TILT BLACK |
| 37 | 2061810 | HINGE-PLASTIC |
| 38 | 2037301 | BUSHING-HING [2.EA] |
| 39 | 2062800 | TENSION BLOCK-SNAP IN |
| 40 | 2011385 | SCREW, TENSION/KNOB |
| 41 | 2060515 | PIN, TILT LEVER |
| 42 | 2061520 | COLLAR-DEPTH |
| 43 | 2011365 | SCREW-COLLAR/NEW KNOB |
| 44 | 2050609 | LEADWIRE 10 GA SPADE TERM |
| 45 | 2020702 | SPADE TERMINAL 10GA. [2.EA] |
| 46 | 2026300 | TIE WRAP [2.EA] |
| 47 | 2062515 | CONTROL BOX |
| 48 | 2060215 | CONTROL BOX COVER |
| 49 | 2065704 | DECAL COVER ENDURA C2 55 |
| 50 | 2064028 | SWITCH-FWD/REV 5 SP |
| 51 | 2033400 | SCREW-10-24 X 1-3/4 |
| 52 | 2013110 | NUT-10-24 HEX |
| 53 | 2012100 | SCREW-8-18 X 5/8 [6.EA] |
| 54 | 2990919 | INNER HANDLE ASSEMBLY |
| 55 | 2060405 | PIVOT, HANDLE |
| 56 | 2012102 | SCREW |
| 57 | 2990928 | OUTER HANDLE ASSEMBLY |
| 58 | 2060009 | FRONT BEARING |
| ■ | 2888460 | O-RING, GASKET SEAL KIT |

* This item is part of an assembly. This item cannot be sold separately due to machining and/or assembly that is required.

WIRING DIAGRAM

